

KAYAK REVIEWS

Pinguino 145 4PD

by Pygmy Kayaks

Our new Pinguino 145 4PD (four panel rear deck) has morphed our best-selling boat, the Pinguino 145 recreational kayak, into a kayak that is better in surf, fits shorter paddlers better and is much easier to Eskimo roll. Her new smaller arched cockpit with a very low rear cockpit height makes static bracing and Greenland rolling easy. Her new front deck design, which cuts the side deck panels away to allow a lower, closer, more comfortable paddle stroke, also makes her more ergonomic for smaller paddlers. She retains the same very stable initial stability, solid tracking and ability to cut strong leaned turns that make the Pinguino a great boat for maneuvering in tighter spaces. The Pinguino 145 4PD can handle rough water, surf, playing in rock gardens as well as messing about on calm waters.

-John Lockwood
Pygmy Boats

REVIEWERS

LJ: 5'1", 150-pound female. Day paddle. Winds to 20 knots with gusts, wind waves 1 to 2 feet with whitecaps and shorebreak. Cargo: 15 lbs.

GL: 5'11", 165-pound male. Day paddles, 2-3 miles each; speed test; load test; roll and rescue practice. Sea state: Winds to 15 knots, wind waves to 2 feet. Cargo: 45 lbs.

TE: 6' 1", 200-pound male. Day trip. Winds to 8 knots, wind waves less than 1 foot. No cargo.

Length overall	14' 5 3/4"
Beam	25 3/4"
Volume	12.64 cu. ft.
Cockpit size	17" x 32 3/4"
Cockpit coaming height	
Forward	11 3/4"
Aft	7 3/4"
Height of seat	1 3/4"
Weight	42 3/4 lbs.

First Glance

The Pinguino 145 4PD is a plywood kit kayak with "nice lines" (LJ) that are "lovely to the eye" (GL). It is "shorter and wider than most touring kayaks but avoids looking tubby. The mahogany plywood planks are nicely proportioned and the recess for the cockpit coaming is functional and well-sculpted" (TE). The 4PD (four-panel deck) has a lower profile than the Pinguino (reviewed, *SK* April '10) trading cargo volume for greater clearance for more advanced, aggressive paddling. "The panels look perfectly joined; the seams are glassed inside, and end pours seal the ends" (GL). The decorative black tape on the sheer line was "peeling in places" (LJ).

For a solo carry the Pinguino was "wonderfully light" (LJ). "There seemed no perfect place for a shoulder carry as the thigh brace got a bit in the way. Still, an easy carry" (GL). For TE the Pinguino "was much easier to carry upside down with the coaming on my back and the backrest serving as a tumpline."

Fit and Outfitting

For LJ the cockpit was "large with plenty of room for my small feet and no interference with folding my legs in or out." GL "had too much hip room; an inch of padding on each side would snug it up. Foot room was great for my size-10 booties." For TE "the cockpit did not, in spite of the kayak's beam, feel too roomy. I was surprised

that foot room for my size-13 neo booties was snug—with my heels together my toes were touching the underside of the deck; not uncomfortable but no room to wiggle. The cockpit opening was long enough for me to get into seat first. The foredeck doesn't get in the way of paddling. The deck's side panels slope down out of the way. Even if I let my stroke get quite low, the paddle shaft hit the coaming rather than my thumb hitting the deck." "A comfortable, stock foam seat is Velcroed to the hull. The broad plastic back band has a thin pad of foam and rotates around two anchor screws. It does a nice job of providing support yet gets out of the way for layback maneuvers" (GL). LJ thought the adjustable thigh braces "needed more thigh padding, especially along the outside—the fit wasn't snug and while my knees remained in contact with the upper deck I didn't have that locked-in feeling for lumpy water." For GL the "thigh braces provided good support and excellent contact location for bracing and rolling, with great contact on the inner thigh from the pronounced hook" and for TE



“the foam thigh hooks had more than enough contour. I didn’t need that much and I’d trim them down for a custom fit.” The foot braces are “easily operated by foot. I could make adjustments while afloat and with the spray deck in place” (TE).

The deck fittings are short lengths of webbing bolted to the deck. There were bungees for gear ahead and behind the cockpit and perimeter grab lines along the perimeter of both decks. TE “would add a short bungee aft to contain the shaft ends of a spare paddle.

Stability and Maneuverability

The Pinguino’s initial stability was rated “good” (LJ), “high” (GL) and “very good” (TE). Secondary stability was, respectively, “very solid,” “very high; secure and predictable on edge” and “excellent, very strong. I could edge as best I could and then lean to the side and still have strong righting force. The secondary stayed strong with the coaming touching the water.”

The Pinguino steers “very well” (LJ) “with no tendency to veer at any speed” (TE). It “steers with leaned turns very well, a sweep and a lean produce a tight turn” (GL). In wind, LJ “had no difficulties holding a straight course.” For GL, the Pinguino had “a neutral helm with no weathercocking whatsoever in conditions to 15 knots; turned easily in any direction, and tracked with no need to adjust trim or paddle stroke.”

Speed and Surfing

The Pinguino had “good acceleration, with a cruising speed fast enough for group paddles” (GL). On flat water TE logged “4 knots at a relaxed pace, 4 ¾ at an exercise pace and 5 ½ knots in a sprint.” In wind waves “it felt light, maneuvered well and picked up speed quickly. It did try to broach a few times. It is without a rudder or skeg so I couldn’t be lazy with it” (LJ). “The kayak rode up over the wind waves without much splash, as the waves were deflected by the hull” (GL).

MANUFACTURER’S RESPONSE

Thanks again to *Sea Kayaker* for producing these detailed product reviews. It’s a great service. I’m impressed that you drafted paddlers from 5’1” to 6’1” and that they all reported the Pinguino 145 4PD handled well for them in 15- to 20-knot winds and whitecaps. She is a sweet, well-behaved boat. She came with very aggressive semi rigid foam thigh braces, which, in the real world, would be custom-shaped by each of the three paddlers if it were their boat. I agree with TE’s comment regarding bulkhead placement. Kayak-kit builders can install their bulkheads to match their leg length and can also add hip blocking and deck rigging to suit their body and tastes.

Our Pinguino family of kayaks are very popular recreational kayaks. Shortly after they were introduced we discovered that they were also excellent surf boats. Their extra width gives a broader surfing platform with more curve and cut at the chine. Our four-panel rear deck (4PD) version gives the surf and rolling communities a boat that they can manipulate and roll much more easily. I went on a two-week solo wilderness camping trip with the Pinguino 145 4PD last summer and had a blast with it.

-John Lockwood
Pygmy Boats

BEST FEATURES

- Stability
 - Maneuverability
- ### TO IMPROVE
- Bungees for securing spare paddle



Rolling and Rescue

The Pinguino is “easy to roll, although the beam makes it a tad slow in coming around. The thigh braces dug in too much, the thigh brace area being a bit narrow, though the contact location was excellent. Sculling with my ear on the water was no problem” (GL). LJ “felt like the width interfered a bit with getting my arms cleared of the sides but I was able to come up immediately in the lumpy water. The back band did not interfere.” “Rolling was a breeze for both C to C and layback. I had clearance for about three quarters of a layback” (TE). “The roomy cockpit provided plenty of space for exiting and entering. The cowboy scramble reentry was quick and easy” (LJ). “Wet exit requires a bit of care not to get caught by the thigh braces, but not bad. The bungees aft of the cockpit can be used for a paddle float reentry. Reentry and rolling was not a problem” (GL). “For the pump and dump, the light weight made it easy to lift and hold the bow up while the water drained” (TE).

Cruising

“The stowage is quite good for a weeklong outing or longer. Both hatches have long, tapered openings that facilitate packing” (GL). “The forward bulkhead was about 8 inches ahead of where I had the foot braces set. I’d be tempted to custom-fit the bulkhead closer to reduce the floodable area of the cockpit and increase the size of the cargo compartment. The hatch covers were easy to open and

close with the three locking, tightening lever-closures. Foam gaskets create the seals. I had a dry aft compartment and a half cup of water forward after rolling and self-rescue drills” (TE). For LJ “the front hatch stayed dry and there was about a half cup of water in the rear.” GL “had a tablespoon of water in the bow and just a teaspoon in the stern after rolls and self-rescues.” The bulkheads are plywood, secured with fiberglass,

“With a cargo load of 45 pounds, the already stable Pinguino got even more so, with just gobs of stability. It felt a bit more sluggish turning, though, and slower to accelerate” (GL).

The Bottom Line

“The Pinguino is an affordable, beautiful and easily transportable little boat that can promise lots of fun in both flat and rough conditions for the beginning to advanced paddler” (LJ). “It’s a multipurpose kayak with few peers: surfing ability for coastal travel or day trip fun; low windage and well-balanced for rough conditions; ample gear storage for multiday trips; and high stability for photographers or fishers” (GL). “The Pinguino handled my weight with ease and rewarded my paddling with easy manageability. While its top-end speed is, as expected, not as much as that of the longer sea kayaks, it is certainly up to cruising. The Pinguino is an entirely tour-capable kayak that would keep me upright while I enjoy the scenery and take photos” (TE). **SK**

KAYAK REVIEWS

PINGUINO 145 4PD MANUFACTURING DATA

Designed: 2012

Standard construction: Glass-wood-glass composite, sold as a kit

Standard Features: Seat, backrest, foot braces

Option: Rudder, deck rigging, perimeter lines, bulkheads and hatches

Weight: 36 pounds (16.32 kg)

Price: \$ 1,059

Availability: Order direct from Pygmy Boats Inc.

Manufacturer: Pygmy Boats Inc., 360-385-6143, www.pygmyboats.com, info@pygmyboats.com

TECH TALK: Readers interested in the full set of hydrostatics can find them posted on our website at www.seakayakermag.com along with additional data. An explanation of the terms and procedures used in the kayak test program is also available on the site.

SPEED VS. RESISTANCE

Resistance in pounds.

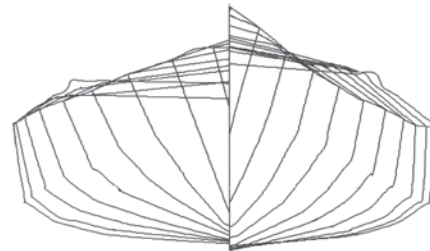
Speed	Winters/KAPER	Broze/Taylor*
2 knots	0.93	0.92
3 knots	1.95	2.01
4 knots	4.06	4.24
4.5 knots	6.51	7.50
5 knots	9.31	12.50
6 knots	15.73	—

*Automated with the Gertler program by Robert Livingston

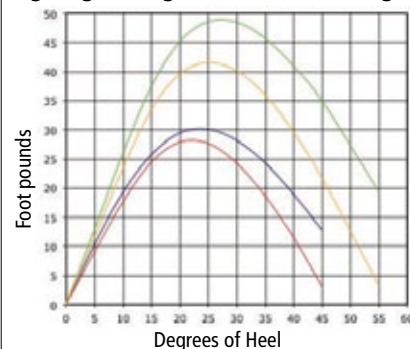
HYDROSTATICS

Waterline length	12' 7.2"
Waterline beam	25.2"
Draft	5.2"
Prismatic coefficient	0.41
Wetted surface in sq. ft.	20.67
Center of buoyancy	52%

(Hydrostatics calculated with a 250-pound load.)



Righting/Heeling Moments (Fixed-weight)



Stability Curves*

- 150 lb. paddler, no cargo
- 200 lb. paddler, no cargo
- 150 lb. paddler, 100 lb. cargo
- 200 lb. paddler, 100 lb. cargo

*Formula revised December 2009. (Not comparable with stability graphs generated prior to December 2009.)

PYGMY

BOATS INC

“Here's a nice picture of one of our two Cohos... We have hundreds of happy hours in them so far! The only problem we have with them is that we will routinely be held up at the launch while other folks check them out!” - Rick Rule, Washougal, WA
(Proud owner of a pair of Cohos!)

SK ✓
READERS CHOICE
Sea Kayaker
MAGAZINE



Award-Winning Boat Kits

Call for a FREE Catalog: (360) 385-6143 | www.PygmyBoats.com

Photo courtesy of Tyler Bames, Bigtime Photography and Film